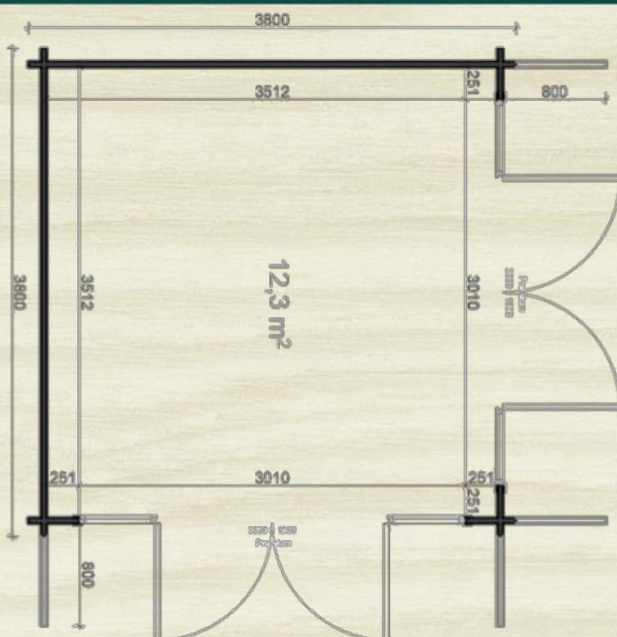




IDEASWOOD
SIMPLE LIVING MADE EASY



Sydney Garden House / Home Office

The Sydney 3.8m x 3.8m solid timber Garden House / Home office / multi-purpose room has 44mm walls.

It has a modern flat roof and double French doors with fixed panels on two walls. All glass is double glazed proving energy efficiency and sound insulation, making it ideal for a Premium Home Office, Sound Studio or your own special retreat!

Being only 12.3m², the Sydney can be built without council permission in some areas, but please check your local council regulations before purchasing a kit to ensure compliance.

It can be erected in less than a day on a prepared level base. 19mm Solid Wood Floorboards are included in the kit.



Simple Living Made Easy





Description	Measurements (m)
Total Height	2.43
Wall Height	2.36
Base Footprint	3.6 x3.6
Internal House Area M2	12.3
Roof Area m2	20.3
Underlayer	23
External Area for painting & insulation	28.6
Door Type	2 quadruple full glass
Threshold	Covered with steel
Window Type	1 double
Window / Door Quality	Premium
Glazing	Double glazed
Floor boards	19 mm
Roof Type	Flat
Roof Overhang	0.8
Possible to flip plan?	yes